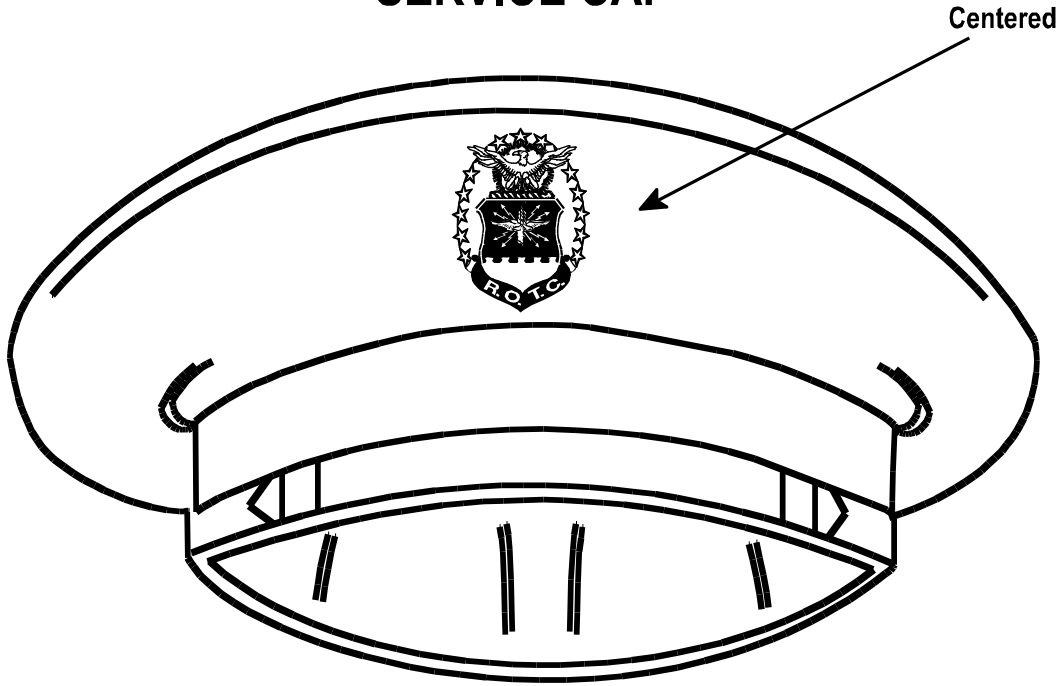
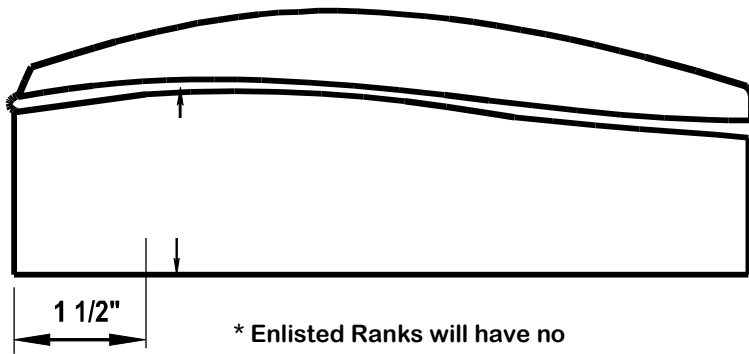


CADET MALE HEADGEAR

SERVICE CAP



FLIGHT CAP



* Enlisted Ranks will have no hat insiniana on the flight cap

centered top to bottom and
1 1/2 inches from front of cap

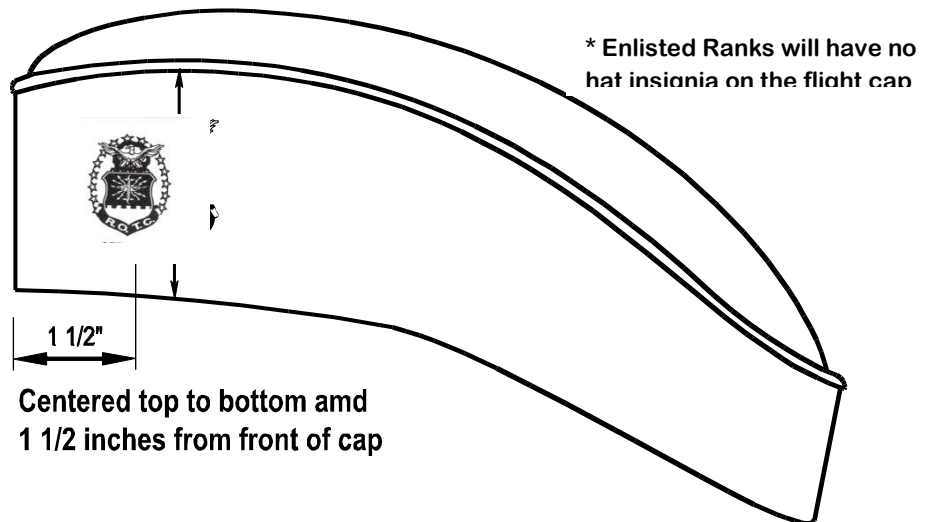
Officers wear hat insiniana with stars

CADET FEMALE HEADGEAR

SERVICE CAP



FLIGHT CAP

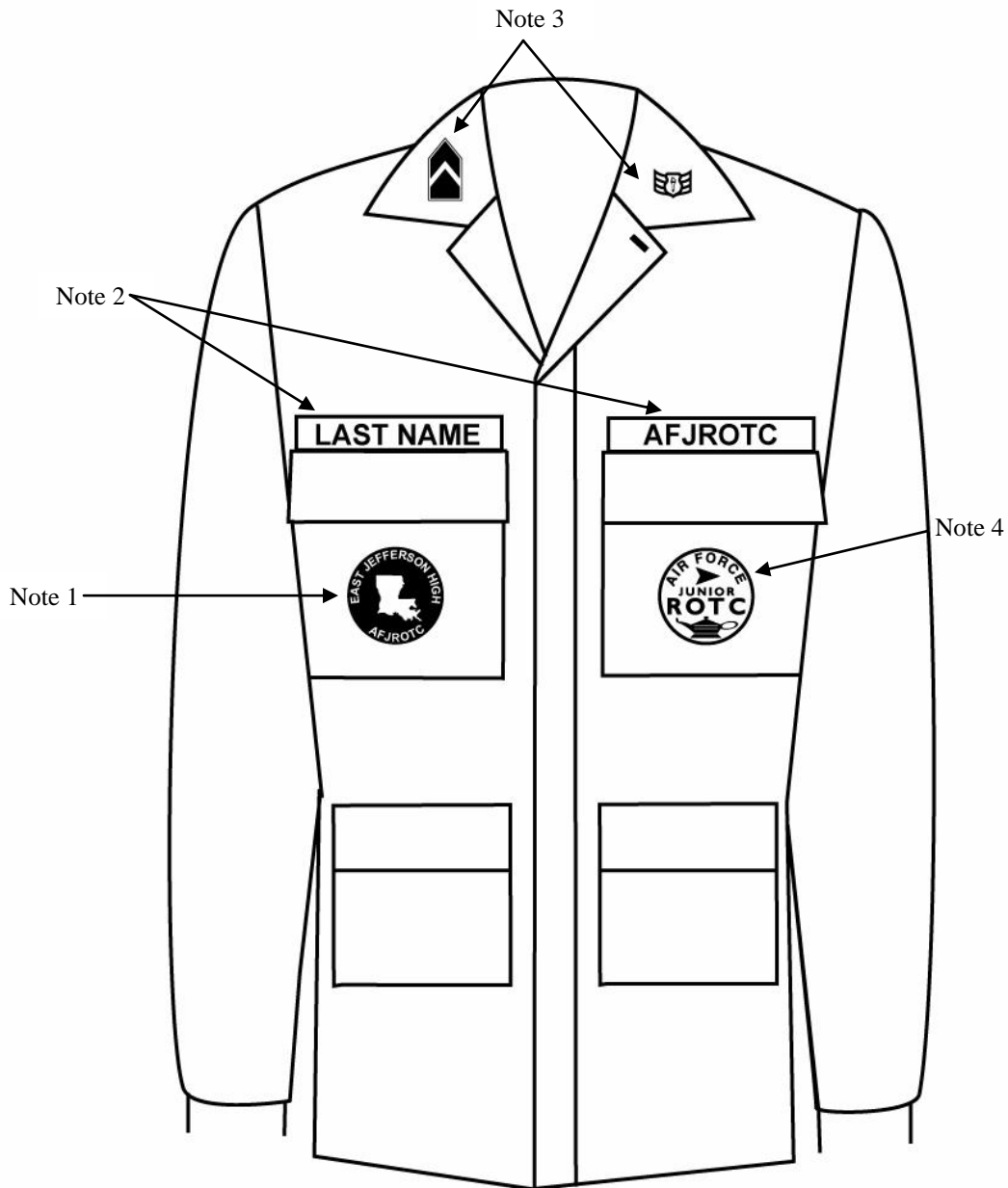


Officers wear hat insignia with stars

ed

Attachment 5 Cadet BDU

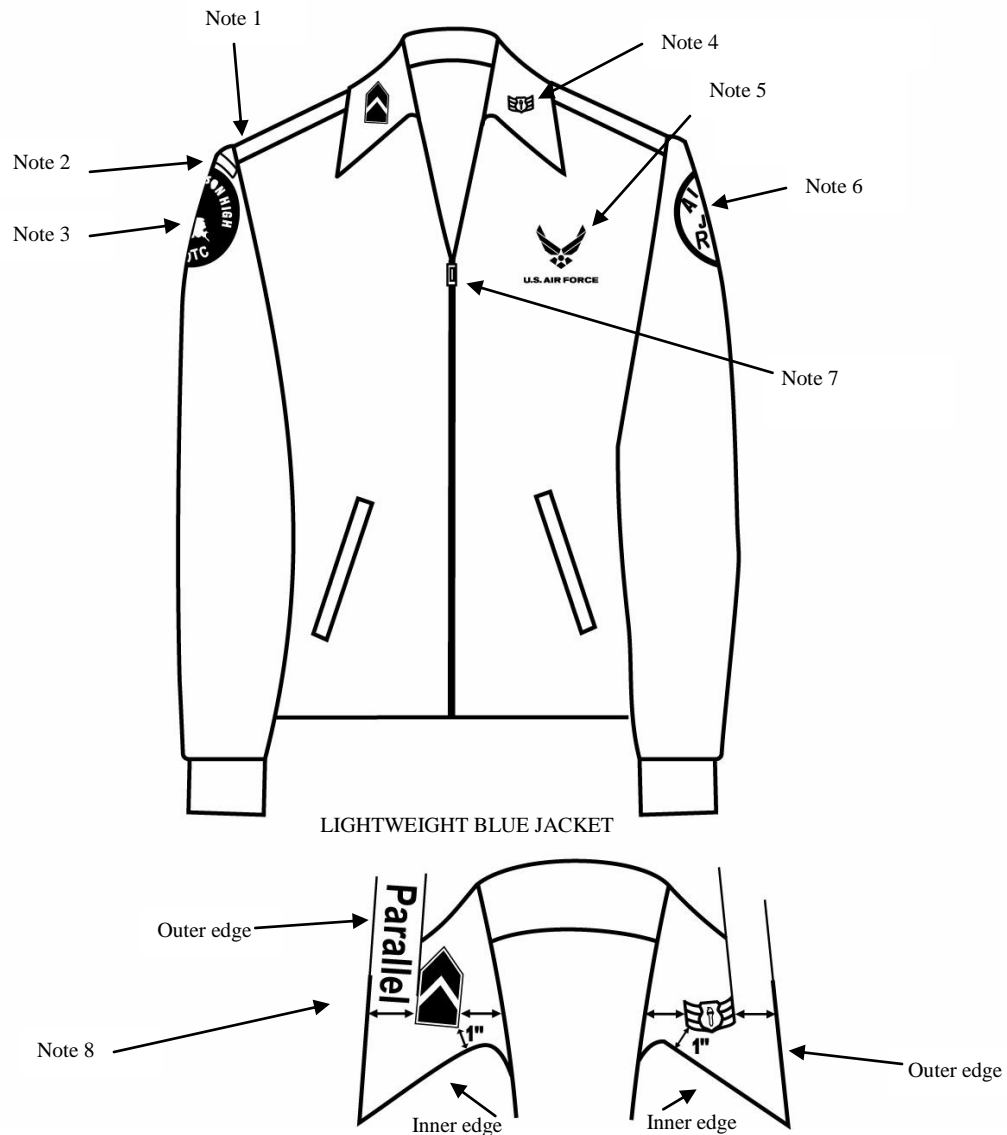
CADET BATTLE DRESS UNIFORM (BDU) Male and Female



1. Unit patch worn on right pocket and centered.
2. Tapes grounded and centered on pockets.
3. Grade insignia (officer or enlisted) is worn on both left and right collars, centered and parallel with bottom of collar. Airman Basic have no collar insignia.

Attachment 6 Cadet Lightweight Blue Jacket

CADET LIGHTWEIGHT BLUE JACKET

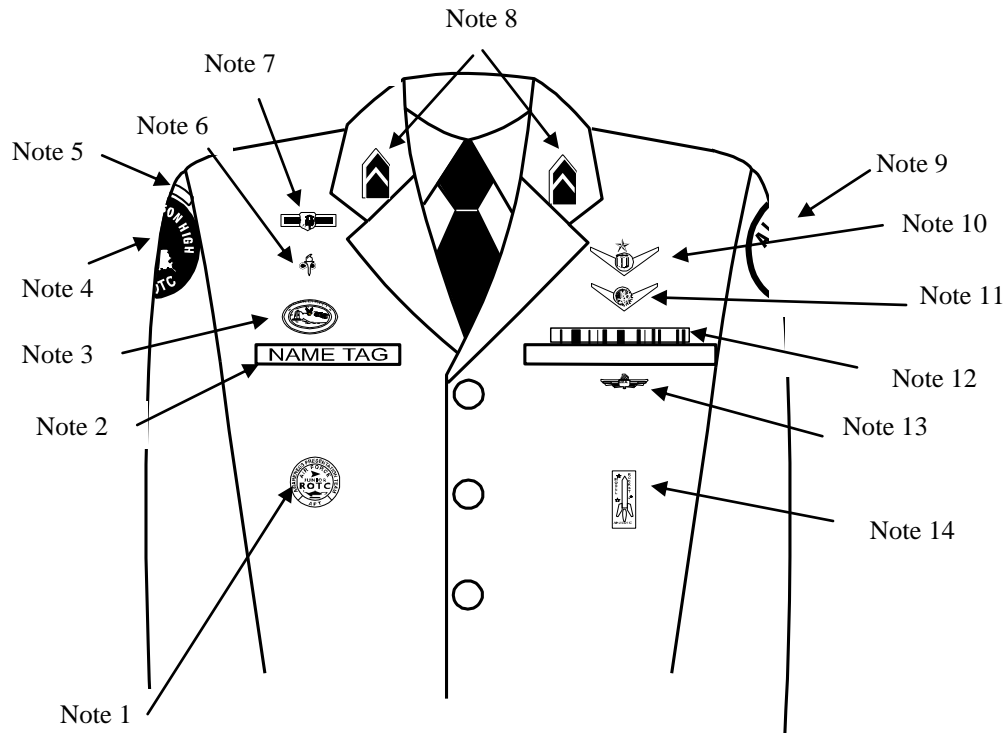


1. (Officers only) When placing rank on epaulet instead of collar, use standard size metal rank, center on epaulet 5/8 in from shoulder seam.
2. Shoulder tabs are centered between unit patch and shoulder seam. If no patch, then 1" below shoulder seam.
3. Unit patch on right sleeve 1/2 to 1 inch below shoulder seam and centered.
4. Grade insignia (officer and enlisted) is worn on both left and right collar. Airman Basic have no collar insignia.
5. Optional item: center vertically between the shoulder seam and where the underarm side seam joins the armhole sleeve and center horizontally between the center zipper and the sleeve armhole seam.
6. AFJROTC patch on left sleeve 1/2 to 1 inch below shoulder seam and centered.
7. Jacket will be closed to at least the halfway point.
8. Center insignia horizontally on collar. Place 1 inch from bottom of collar and parallel to the outer edge of the collar.

Attachment 7 Cadet Male 1620 Service Dress

CADET MALE 1620 SERVICE DRESS

Note: Cadets may wear the rank on both coat and shirt at the same time or only on the coat. The cadets must be in proper uniform at all times. If they have the coat on, the rank insignia must be on the coat. If they remove the coat, the rank must be on the shirt.

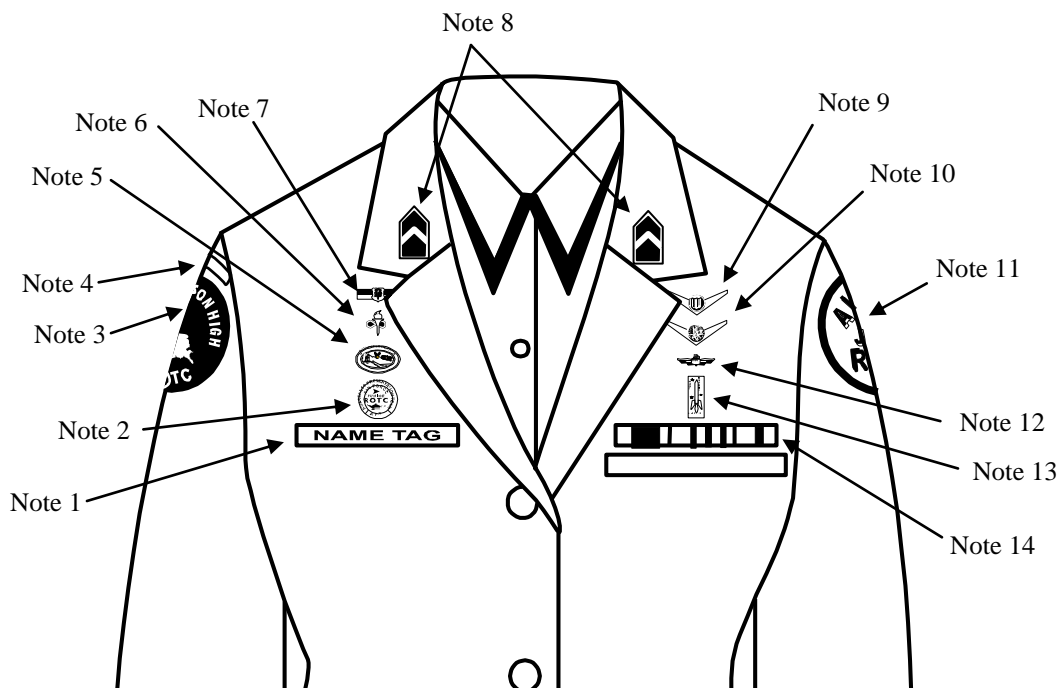


1. Awareness Presentation Team (APT) badge: Center on welt pocket 3 inches below the top.
2. Name tag: Center between arm seam and lapel with bottom edge parallel to top of welt pocket
3. Kitty Hawk Badge: see note 15.
4. Unit patch: Placed $\frac{1}{2}$ to 1 inch below shoulder seam and centered.
5. Shoulder tabs: Center between unit patch and shoulder seam. If no patch, then 1 inch below shoulder seam.
6. Aerospace Education Foundation (AEF) Badge: see note 15.
7. Distinguished Cadet Badge: see note 15.
8. Grade insignia (officer or enlisted) worn on both lapels. Place insignia halfway up the seam, resting on but not over it. Bottom of insignia is horizontal with the ground. *(The lapel insignia (eagles non-chrome) will no longer be worn on the lapels by Airmen Basics.)
9. AFJROTC Patch: Placed $\frac{1}{2}$ to 1 inch below shoulder seam, and centered.
10. Flight Solo or Flight Certificate Badge: see note 15.
11. Ground School Badge: see note 15.
12. Ribbons: Center, on but not over edge of pocket. Wear 3 or 4 in a row. Wear all or some.
13. Academy of Model Aeronautic Wings: worn 1 inch below pocket.
14. Model Rocketry Badge: worn 2 inches below AMA Wings or 3 inches below pocket if no AMA Wings are worn.
15. First badge placed $\frac{1}{2}$ inch above name tag or ribbons and is centered horizontally. Additional badges placed $\frac{1}{2}$ inch above previous badge.

Attachment 8 Cadet Female 1620 Service Dress

CADET FEMALE 1620 SERVICE DRESS

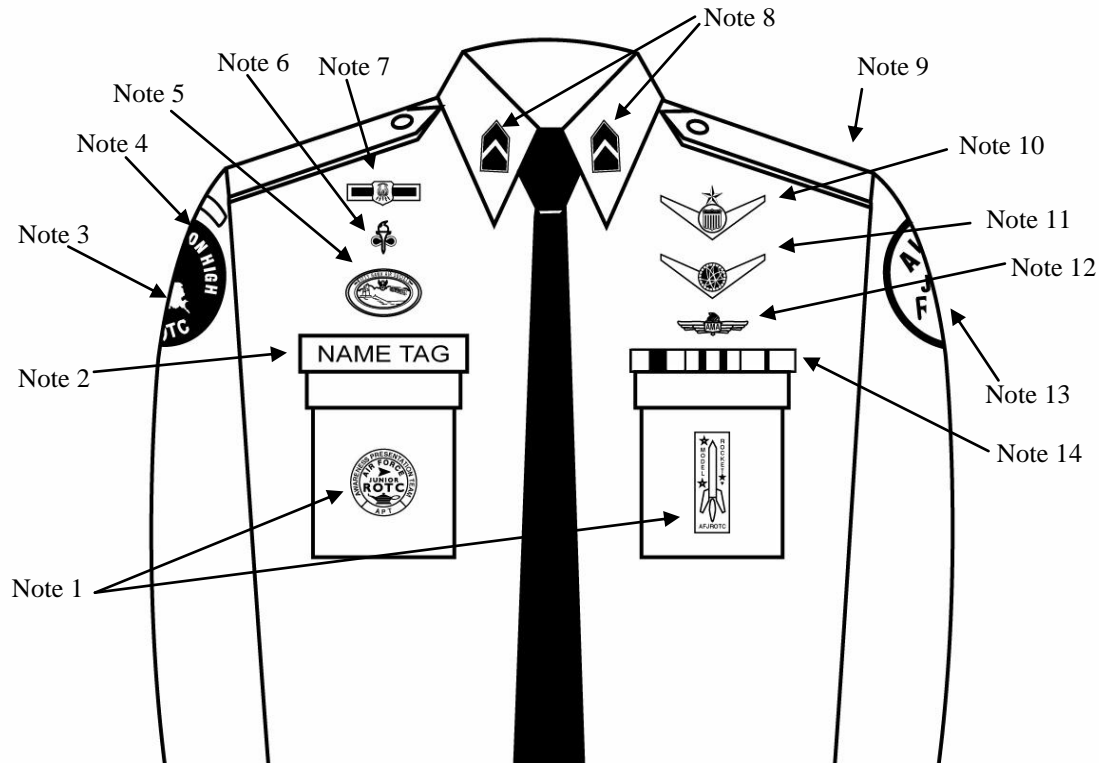
Note: Cadets may wear the rank on both coat and shirt at the same time or only on the coat. The cadets must be in proper uniform at all times. If they have the coat on, the rank insignia must be on the coat. If they remove the coat, the rank must be on the shirt.



1. Name tag: authorized for wear and is to be centered on right side, even with to 1 1/2 inches higher or lower than the first exposed button.
2. Awareness Presentation Team Badge: see note 15.
3. Unit patch: center 1/2 to 1 inch below shoulder seam.
4. Shoulder tab: centered between unit patch and shoulder seam. If no patch, then 1 inch below shoulder seam.
5. Kitty Hawk Badge: see note 15.
6. Aerospace Education Foundation (AEF) Badge: see note 15.
7. Distinguished Cadet Badge: see note 15.
8. Grade insignia (officer or enlisted) worn on both lapels. Place insignia halfway up the seam, resting on but not over it. Bottom of insignia is horizontal with the ground. *(The lapel insignia (eagles non-chrome) will no longer be worn on the lapels by Airmen Basics.)
9. Flight Solo or Flight Certificate Badge: see note 15.
10. Ground School Badge: see note 15.
11. AFJROTC Patch: center 1/2 to 1 inch below shoulder seam.
12. Academy of Model Aeronautic (AMA) Wings: see note 15.
13. Model Rocketry Badge: see note 15.
14. Ribbons: center ribbons resting on but not over edge of welt pocket. Wear 3 or 4 in a row. Wear all or some.
15. First badge placed 1/2 inch above name tag or ribbons (whichever is appropriate) and is centered horizontally. Additional badges placed 1/2 inch above previous badge.

Attachment 9 Cadet Male Blue Shirt

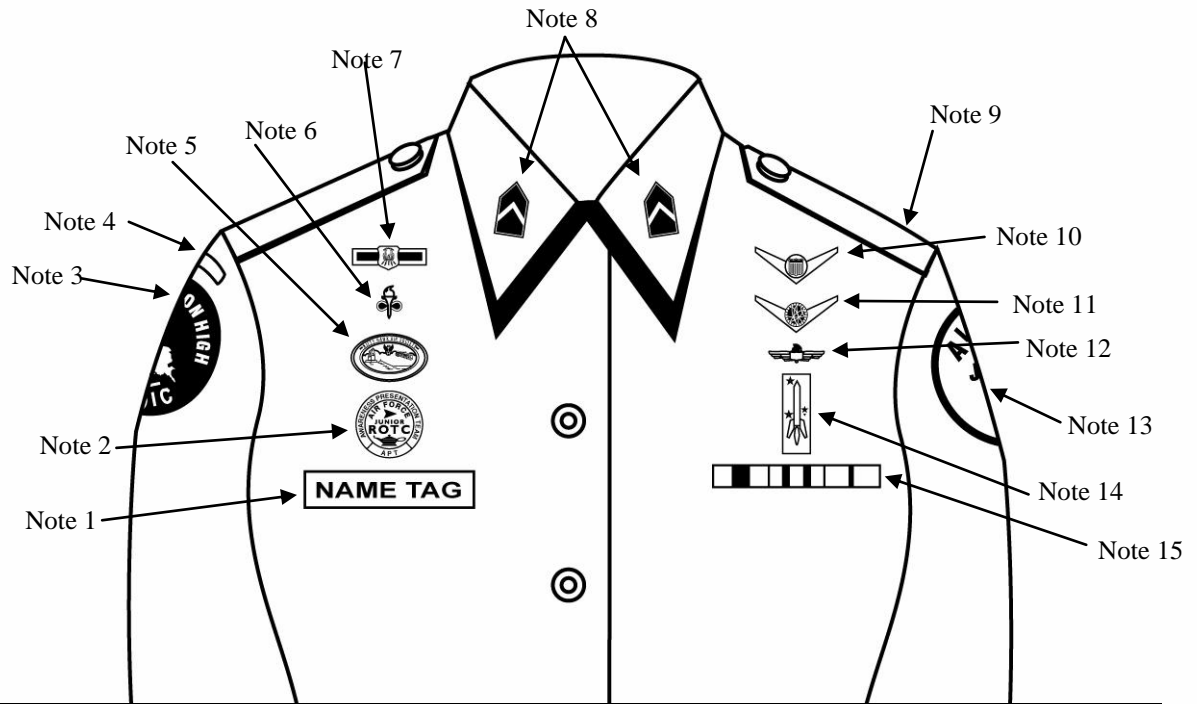
CADET MALE BLUE SHIRT



1. Awareness Presentation Team (APT) and Model Rocketry Badge are centered on the pockets on the appropriate sides as displayed above.
2. Name tag: authorized for wear and is to be grounded and centered over wearer's right pocket.
3. Unit patch: center $\frac{1}{2}$ to 1 inch below shoulder seam.
4. Shoulder tab: center between unit patch and shoulder seam. If no patch, then place 1 inch below shoulder seam.
5. Kitty Hawk Badge: see note 15.
6. Aerospace Education Foundation (AEF) Badge: see note 15.
7. Distinguished Cadet Badge: see note 15.
8. Grade insignia (officer or enlisted) worn on both left and right collar, centered side to side and top to bottom. Enlisted rank's bottom point of torch points toward the point of the collar. Officer top point of rank aligned with point of collar. Airman Basic have no insignia of any kind on the collar.
9. (Officers only) When using officer cloth rank on epaulets versus miniature metal rank on collar, place as close as possible to shoulder seam.
10. Flight Solo or Flight Certificate Badge: see note 15.
11. Ground School Badge: see note 15.
12. Academy of Model Aeronautic (AMA) Wings: see note 15.
13. AFJROTC Patch: center $\frac{1}{2}$ to 1 inch below shoulder seam.
14. Ribbons: ground and center on pocket.
15. First badge placed $\frac{1}{2}$ inch above name tag or ribbons and is centered horizontally. Additional badges placed $\frac{1}{2}$ inch above previous badge.

Attachment 10 Cadet Female Blue Shirt

CADET FEMALE BLUE SHIRT



1. Name tag: authorized for wear and is to be centered on right side, even with to 1 1/2 inches higher or lower than the first exposed button.
2. Awareness Presentation Team Badge: see note 16.
3. Unit patch: center 1/2 to 1 inch below shoulder seam.
4. Shoulder tab: centered between unit patch and shoulder seam. If no patch, then 1 inch below shoulder seam.
5. Kitty Hawk Badge: see note 16.
6. Aerospace Education Foundation (AEF) Badge: see note 16.
7. Distinguished Cadet Badge: see note 16.
8. Grade insignia (officer or enlisted) worn on both left and right collar, centered side to side and top to bottom. Enlisted rank's bottom point of torch points toward the point of the collar. Officer top point of rank aligned with point of collar. Airman Basic have no insignia of any kind on the collar.
9. (Officers only) When using officer cloth rank on epaulets versus miniature metal rank on collar, place as close as possible to shoulder seam.
10. Flight Solo or Flight Certificate Badge: see note 16.
11. Ground School Badge: see note 16.
12. Academy of Model Aeronautic (AMA) Wings: see note 16.
13. AFJROTC Patch: center 1/2 to 1 inch below shoulder seam.
14. Model Rocketry Badge: see note 16.
15. Ribbons: Center, parallel with ground. Align with bottom of name tag. Or, if no name tag, align bottom of ribbons even with to 1 1/2 inches higher or lower than the first exposed button.
16. First badge placed 1/2 inch above name tag or ribbons (whichever is appropriate) and is centered horizontally. Additional badges placed 1/2 inch above previous badge.